

NOW AVAILABLE



Don't miss your opportunity to own the Hadley model home at Echols Farm. This beautiful home is now available as we prepare for a future move to a new model park in the community. Act today, as this popular, award-winning homeplan will sell fast. Contact our sales team or visit us at the Welcome Center for a tour.

- Your Chance to Own the Hadley Model Home in Echols Farm
- Elegant 2 Bedroom | 2 Bath Ranch Home | Study | Screened Porch
- Second Floor Attic & Storage Accessed by Permanent Stairs
- Owner's Suite with Luxurious Bath and Walk-in Shower with Seat
- Open Floorplan with Vaulted Great Room with Fireplace
- Island Kitchen Opens to Great Room and Separate Dining Area
- Beautiful Windows Open to Private Screened Rear Porch

The Hadley Model
13 Homestead Crossing
Hiram, GA 30141

Specifications
2 Bedrooms plus Study
2 Bathrooms
Screened Rear Porch & Side Patio
2-Car Garage
1760 Square Feet

\$471,890

For Sales Information
Contact 678-401-2306
windsonglife.com

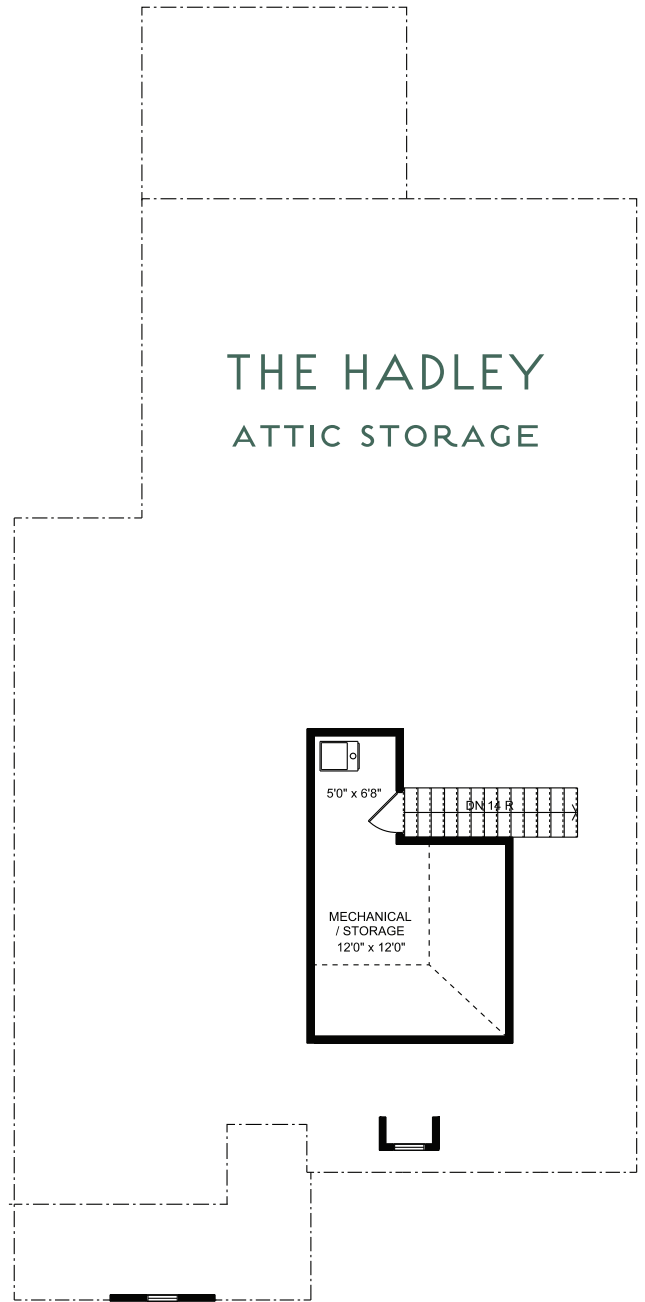
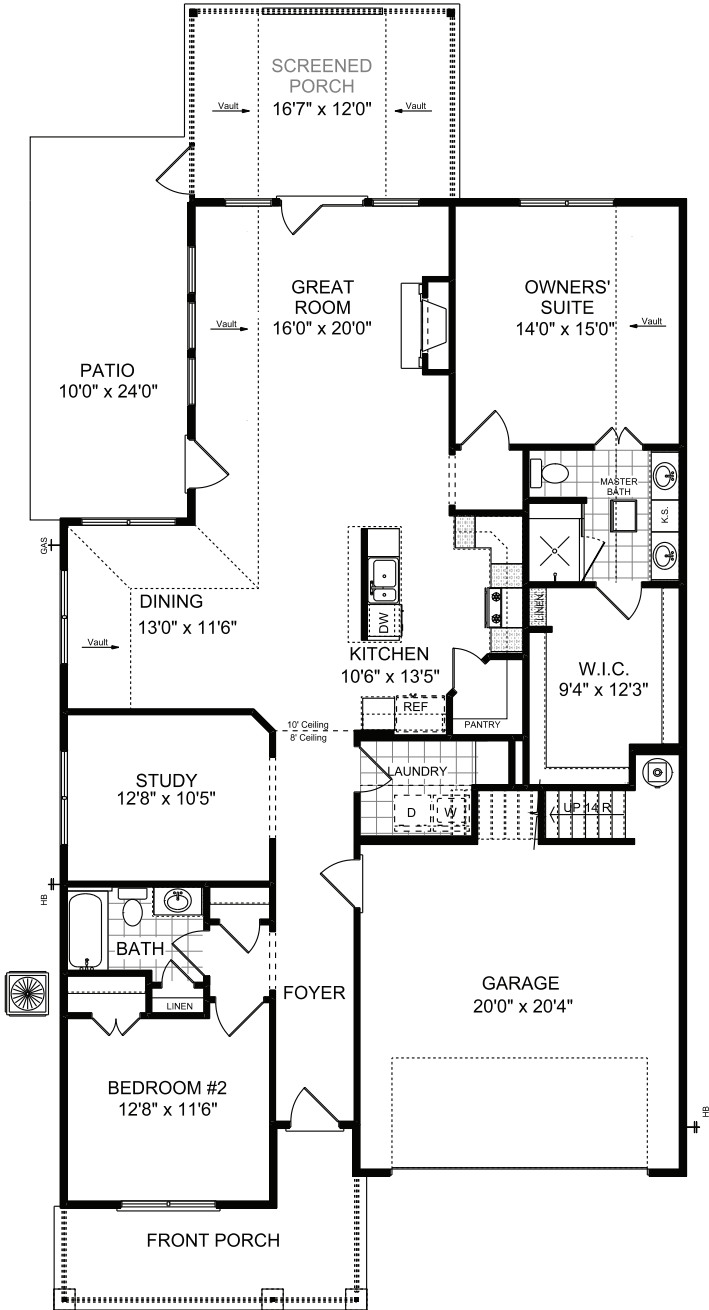
THE HADLEY MODEL HOME

Windsong
PROPERTIES™



ECHOLS FARM

EST. 2019



4511 Macland Road | Hiram, GA 30141 | 678.401.2306 | WindsongLife.com

7.20.22

All illustrations, specifications, pricing and details are believed correct at the time of publication, Windsong Properties reserves the right to make changes, without notice or obligation. This brochure is for illustrative purposes only and not part of a legal contract. Information subject to changes, errors and omissions. Echols Farm is a community designed for residents aged 55 and older. © 2020 Windsong Properties



THE HADLEY MODEL HOME

